

Lightem LST24WF Series RS232/485 to wifi Converter

LST244 is a industrial grade serial RS232/458 to TCP/IP converter via WIFI interface, which enables serial device to be connected in WIFI network. With its software the device can be found easily in the network. Configuration can be easily done via web management.

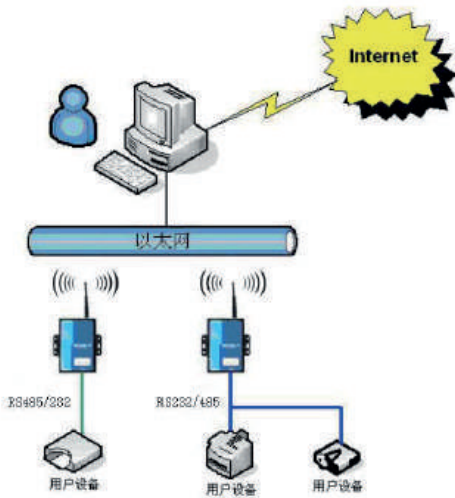


FEATURES

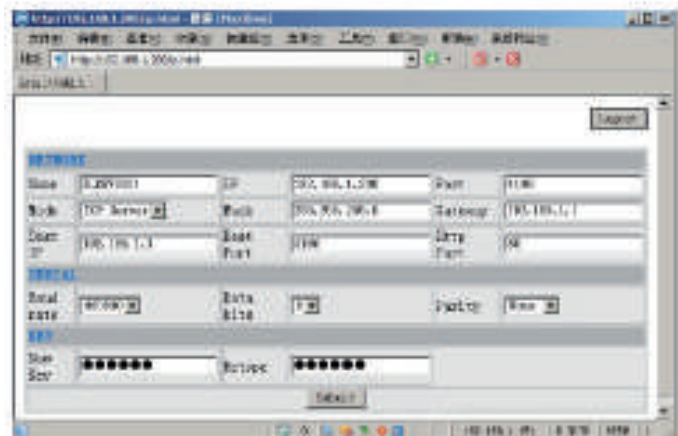
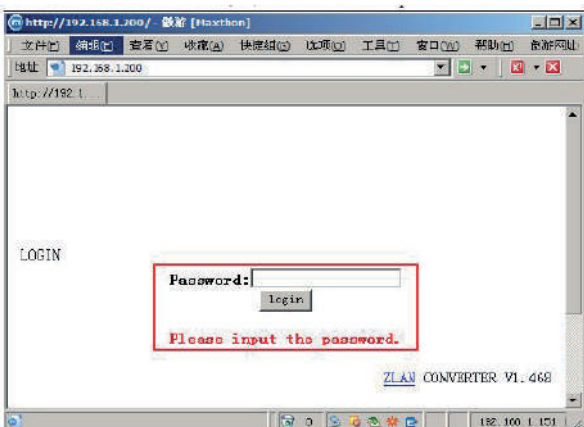
- RS232/485 serial to TCP/IP WIFI conversion
- 1x WIFI antenna
- Support AP or station mode
- Support full duplex low cost reliable servers
- Built in web server, easy configuration via web browser
- Support TCP server / clients, UDP mode
- Support Baud from 1200-460800
- Support virtual port, web management or Vircom configurations

APPLICATION DIAGRAM

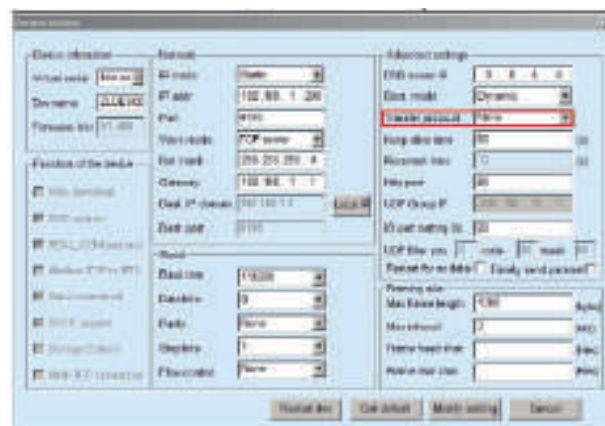
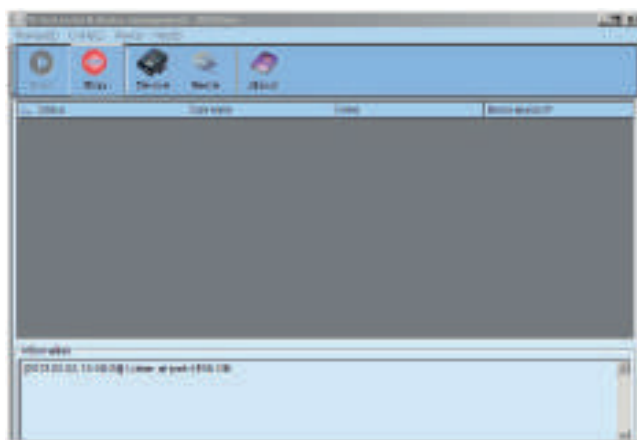
Serial device connected to the WIFI network via LST244WF converter



NETWORK MANAGEMENT



ALTERNATE WINDOW CONFIGURATION TOOL



SPECIFICATIONS

Network interface	Values
WiFi port	802.11 g/b
Ethernet port	1x 10/100Mbps RJ45
Serial interface	1x serial DB9 for RS232, 2PIN terminal for RS485
No. of port	1
Parity bits	none, even, odd, space, mark
Data bits	5~9
Stop parity bit	1, 2
Flow control	RTS/CTS, DTR/DCR, Xon/Xoff
Data rate	1200bps~460800bps
Software feature	
Protocol	TCP, HTTP, UDP, ICMP, ARP, IP, DNS, DHCP
Virtual serial platform	Window 98/2000/XP/Win7/Win8
Configuration	Web, Vircom, serial type AT command
Electrical	
Power supply	DC9~24V, 100mA
Others	94 x 65 x 25mm
Dimension	
Working temperature	-45 ~ +85°C
Storage temperature	-45 ~ +85°C
Humidity	5 ~ 95% RH

ORDERING INFORMATION

P/N	Descriptions
LST24WF	RS232/485 to wifi Converter