

6 Ports 10/100M Switch with 4x POE ports + 2x RJ45

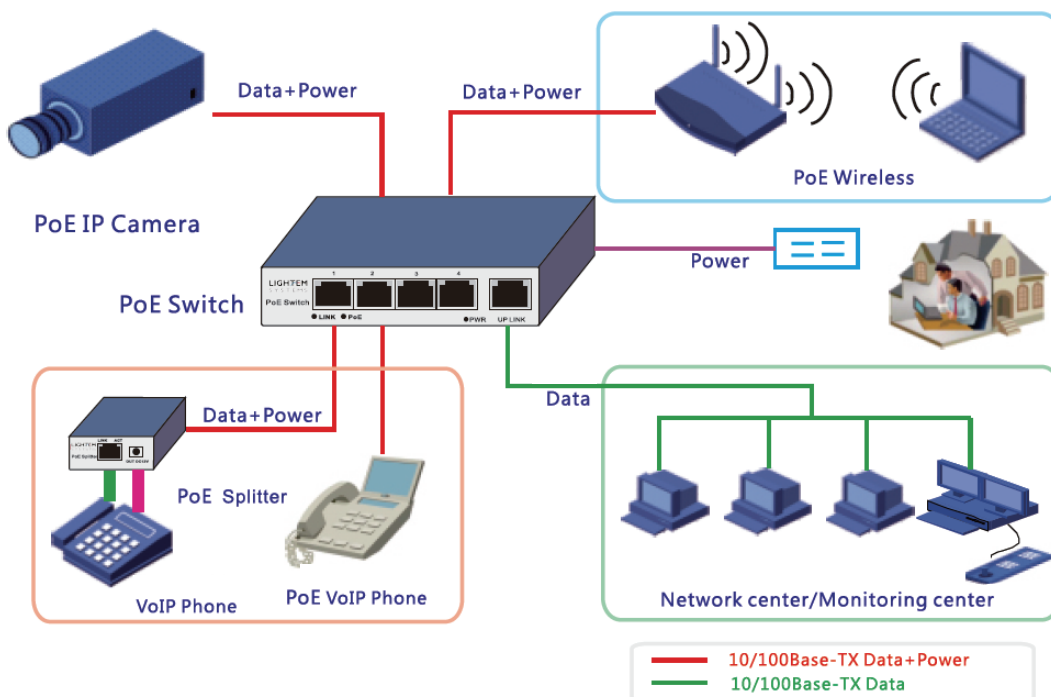
The POE Switch LPF6-4Px features total 6x RJ45ports (10/100M) with 4x POE port (IEEE802.3af or IEEE802.3at), auto sensing algorithm to give power to IEEE802.3af / IEEE802.3at devices. The POE Switch LPF6-4Px provides power and data from same port. In addition, it discontinues the power when POE devices are disconnected.

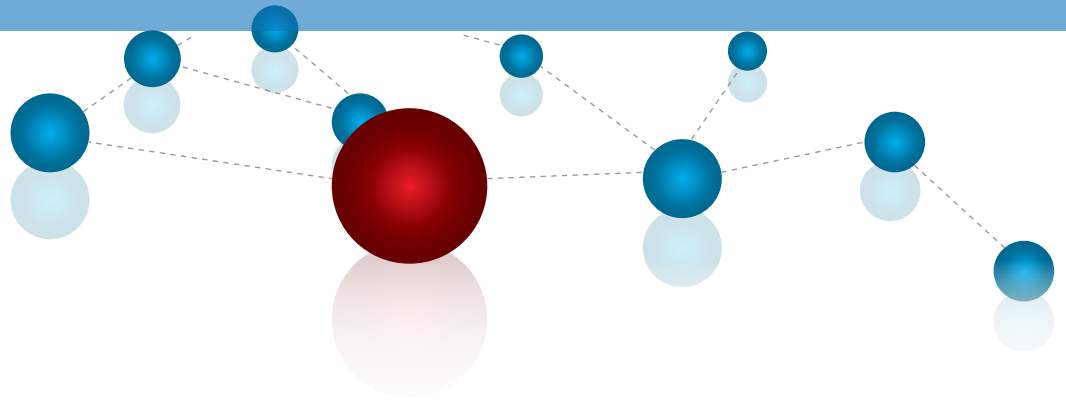
Features

- 4x 10/100M POE (RJ45) + 2x 10/100M RJ45
- Supply power to wireless access points and surveillance cameras over Cat-5 cabling
- IEEE 802.3af/at power on up to 4ports
- Supports PoE power up to 15.4W (IEEE802.3af) or 25.5W (IEEE802.3at) for each PoE port
- Supports IEEE 802.3x flow control for Full-duplex Mode and backpressure for Half-duplex Mode
- 1K entry MAC address table of the PoE Switch with auto-learning and auto-aging
- LED indicators for monitoring power, link, activity and speed
- External power adapter supply



Application

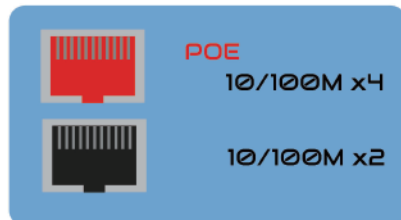




Specifications

6 Ports 10/100M Switch with 4x POE ports + 2x RJ45	
Number of (10/100M) RJ45 ports	6
Number of POE ports	4
Number of Fiber ports	1
Power Pin Assignment	1/2 and 3/6, or alternatively over 4/5(+) and 7/8 (-)
Performance Specifications	
Transmission Method	Store-And-Forward
Network Protocol and Standards	IEEE 802.3i IEEE 802.3u IEEE 802.3x Flow Control
POE standard	IEEE802.3af or IEEE802.3at
POE power	15.4W per POE port (IEEE802.3af) 25.4W per POE port (IEEE802.3at)
Environmental	
Operating temperature	-20 ~ 55°C
Storage temperature	-40 ~ 85°C
Operating humidity	5 ~ 95% non condensation
Power supply	external AC power supply (100-240V)
LED indicators	Power supply, network status, POE status
Physical	
Dimension	118x 89x 25mm
Weight	0.3kg

Functional Diagram



Ordering Information

P/N	Description
LPF6-4Px	6 Ports 10/100M Switch with 4x POE ports + 2x RJ45
x-	F: IEEE802.3af (15.4W per port)
	T: IEEE802.3at (25.5W per port)